

WELCOME TO THE MONYMUSK COMMUNITY GROUP

Why is saving the Donview Centre important to our area?



Heritage of The Donview Centre

Heritage definition:

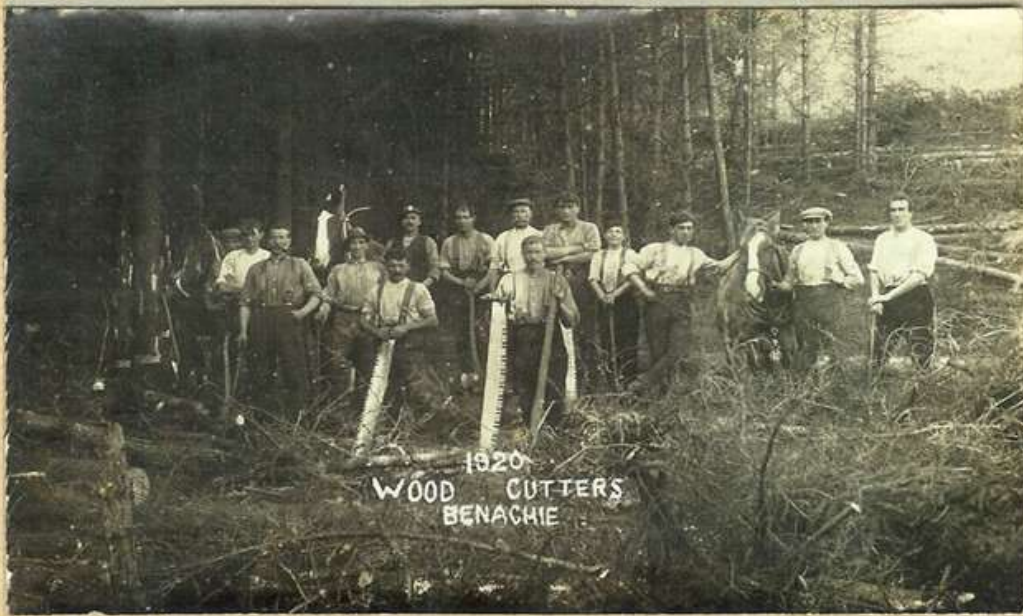
**what we have inherited
from the past,**

**to value and enjoy in the
present and**

**to preserve and pass on to
future generations**



Forestry In The Area Early 1900's



Donview Centre History

1938 - first Forestry Commission planting on Millstone Hill

1945 - **Tilliefourie Forest** – site of forestry workers campsite and cookhouse

1950's - **Tilliefourie office**, 15 men employed, 6 Workers' houses, a Forester's house and store built at Donview.

1956 - renamed as **Bennachie Forest** when more land acquired towards Mither Tap

Mid 1970's - the office merged with Pitfichie Forest Office and relocated to **Tilliefourie**.



Millstone Hill fire hut 1972

1970'S - 2004

Forestry Commission office building and toilets converted to the Donview visitor and education centre with associated car park



2007 -2023

Donview Studio used
by community artists
and children's **Wildlife
Watch Group**

2016-2023 used as a
workshop by **Ross
Aitkenhead,**
cabinetmaker





January 2024 – storm damage to Building

September 2024 – notice of public sale on Donview Car Park noticeboard by Forestry and Land Scotland (FLS)



Private or Community ownership?

FLS proposal to sell the Donview Centre



- Private ownership – loss of facilities including picnic area, parking for organisations, classroom space etc.
- Community Right To Buy (CRtB) or **Community Asset Transfer (CAT)**?
- CAT stage 1 – Business Development
- CAT stage 2 - Purchase by a Community Transfer Body (CTB)
- Funding – Scottish Land Fund but possibly others e.g. UK Shared Prosperity Fund

WHO IS CURRENTLY INVOLVED?

- **Cluny, Midmar and Monymusk Community Council (CMMCC)** have submitted a note of interest on our behalf and agreed to submit the CAT stage 1 application.
- For **CAT**, a new Community Transfer Body i.e. '**Monymusk Community Group**' needs to be established as existing organisations would have to change their constitution to comply.



AREA SELECTED FOR CAT: ESTIMATED 943 RESIDENTS

- The Donview Centre consultation put forward an initial proposal that:
- **The Monymusk and District Community should own, develop and operate the Donview Centre, for the benefit of the local community and the wider public**



TIMELINE SO FAR

| | |
|---|---|
| 1 | Web site [https://monymuskcommunity.org.uk/] set up |
| 2 | Facebook group [https://www.facebook.com/groups/monymuskcommunitygroup] and posters sited in Donview car park and Monymusk shop and village hall |
| 3 | Paper and online questionnaire https://monymuskcommunity.org.uk/donview-centre consultation/ |
| 4 | Engagement - 103 supporters of which 68 are local |
| 5 | Planned meeting with local Community early October with the aim of recruiting members of the Steering Group . |

Our ongoing community engagement and recent local concerns/challenges have highlighted the need and wider benefits of a constituted Monymusk Community Group.

Once established, this Group would hope to develop a working partnership with the Bailies of Bennachie, The Bennachie Centre Trust, Forestry and Land Scotland and other interested parties, e.g. Aberdeenshire Council and local schools.



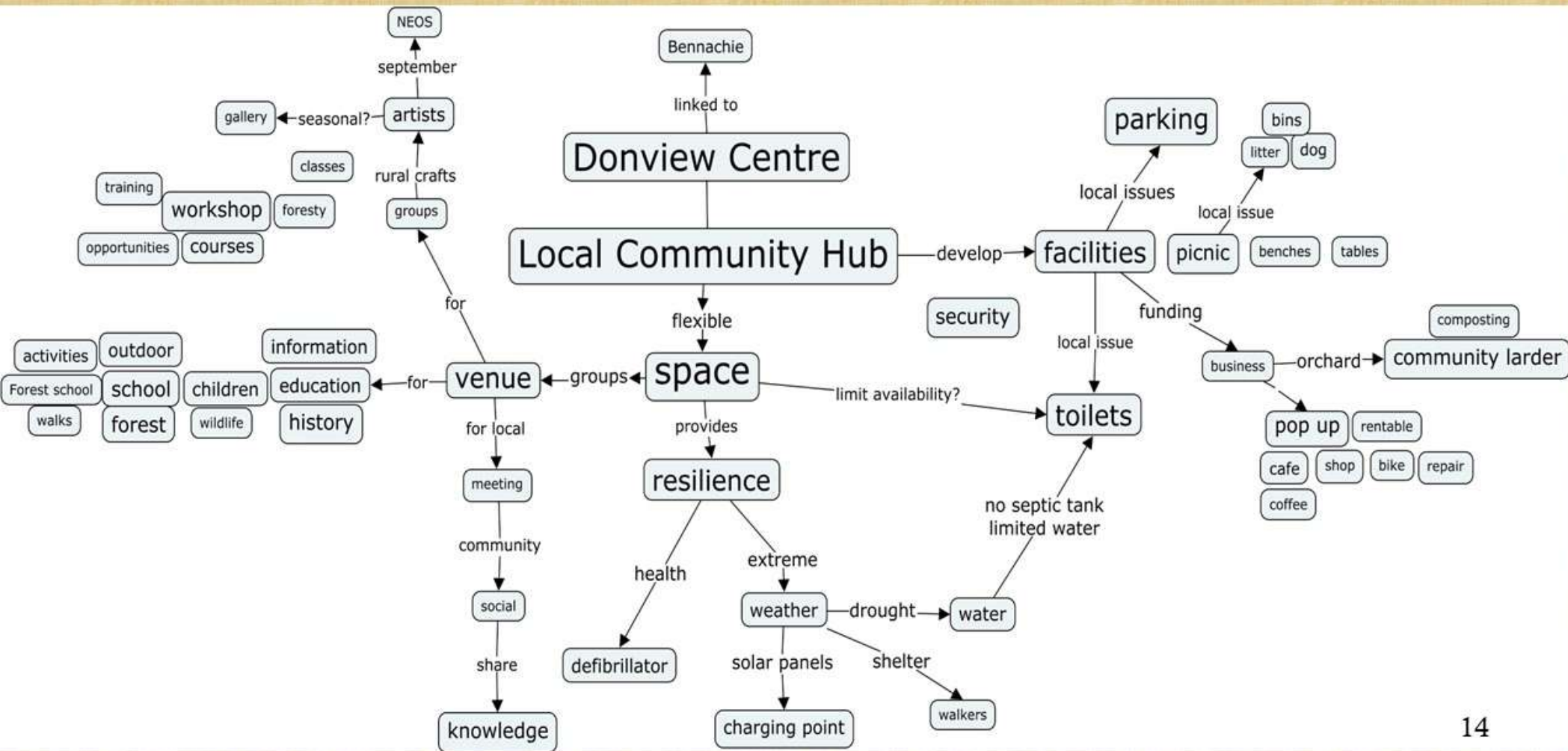
The questionnaire responses have provided us with **many suggestions** for potential **uses** and **facilities** that could be developed on the site.

These will be evaluated once the formal steering group has been established.

As part of CAT stage 1, the risks versus benefits of any development will be assessed by the group.



Donview Centre potential uses taken from questionnaire responses





Autumn is upon us and unlike the trees who are preparing for their winter slumber, we need to actively move this project forward.



Next Steps

We now need some help from our Community to set up the Steering Group.

The Community Transfer Body must have a minimum of 20 members.

If you or friends/family have not filled out the consultation form, please visit:

<https://monymuskcommunity.org.uk/donview-centre-consultation/>



THANK YOU

